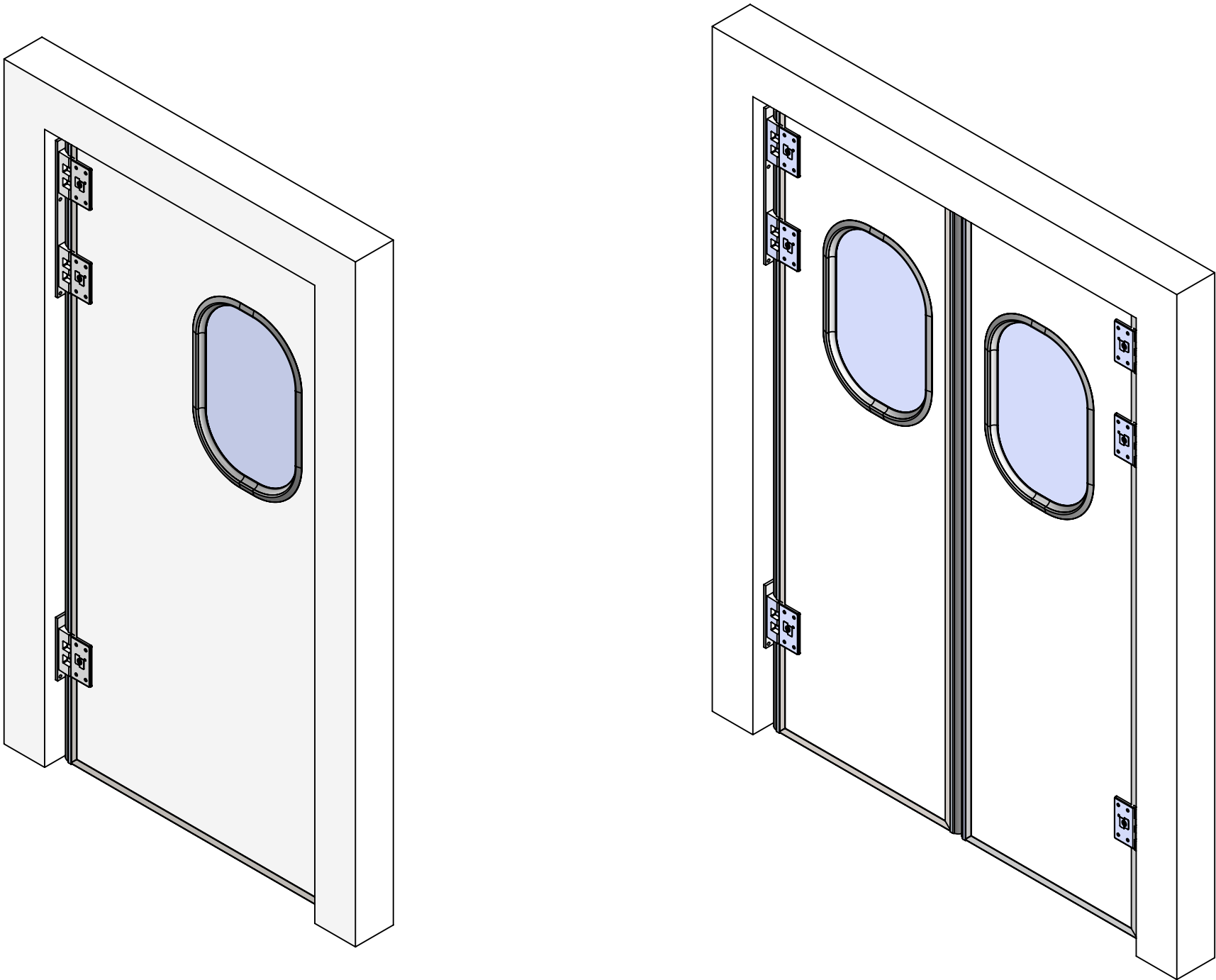
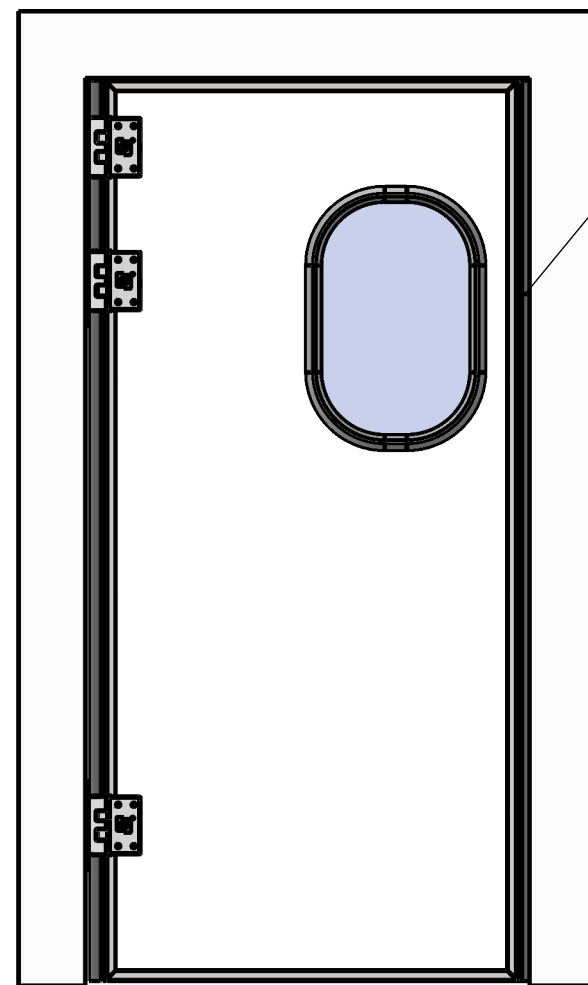


**Semi-insulated Double-Swing Traffic Door SP900**



Leaf in pre-lacquered steel sheet

Type Porte :	Leaf with Delrin hinges with stainless steel mechanism	<b>SPENLE</b>  F-57400 SARREBOURG +33 (0)3 87 25 78 00 <a href="http://www.spenle-international.com">www.spenle-international.com</a> <a href="mailto:info@spenle-international.com">info@spenle-international.com</a>
<b>SP900</b>	Stainless steel Plates	



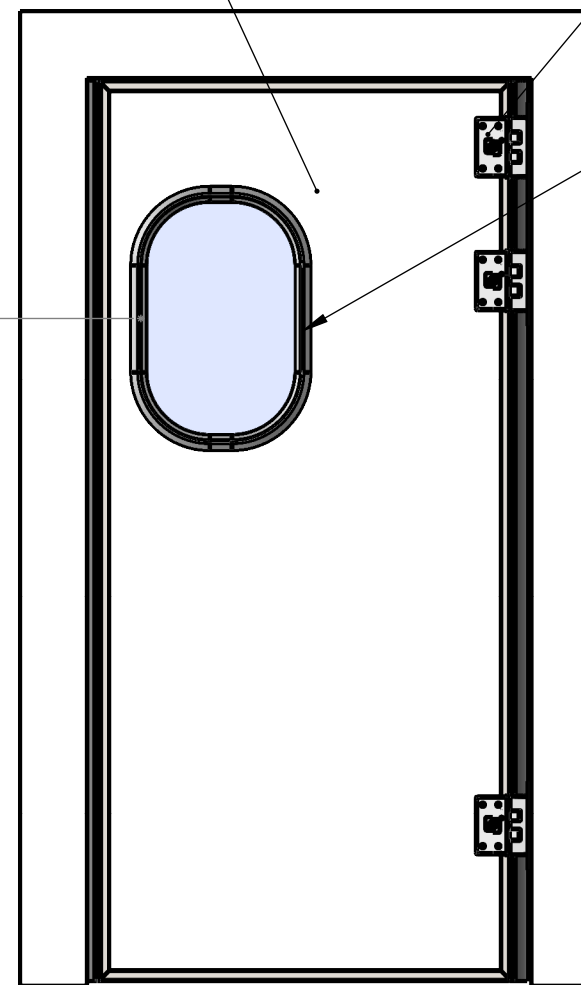
EPDM finger protection

Wall Opening Height (WOH) = COH\*\*



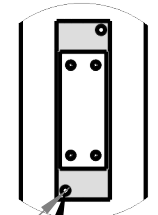
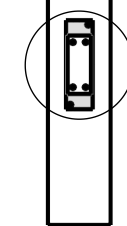
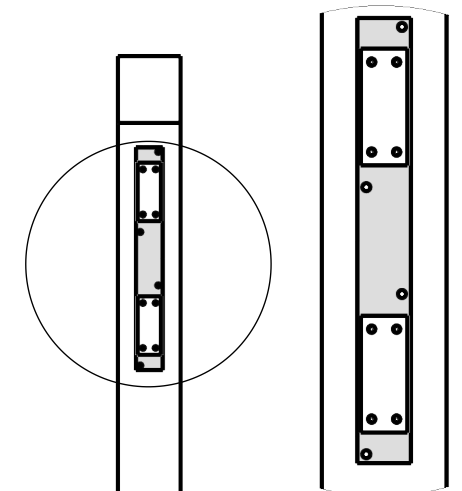
Polyurethane foam core insulation

Vision Panel Axis / Floor = 1500



Delrin Hinges with or without hold open at 90°

350x550 Laminated Glass vision panel with EPDM seal



Ø 9

Plate fastening

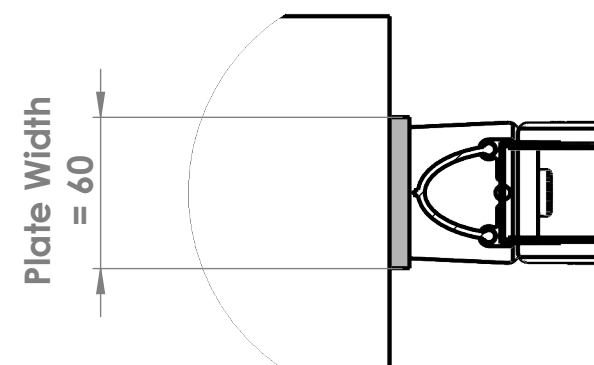
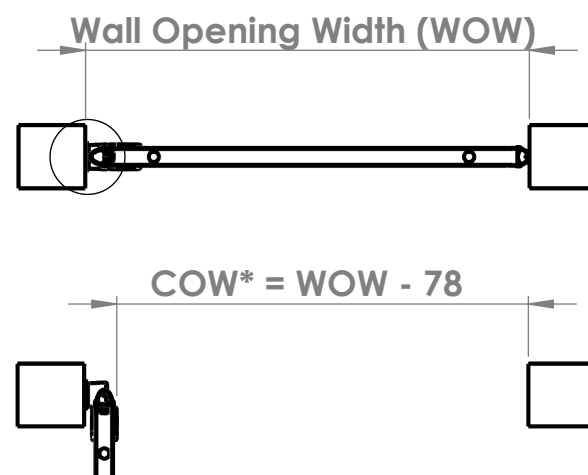


Plate Width = 60

\*COW : Clear Opening Width  
\*\*COH : Clear Opening Height

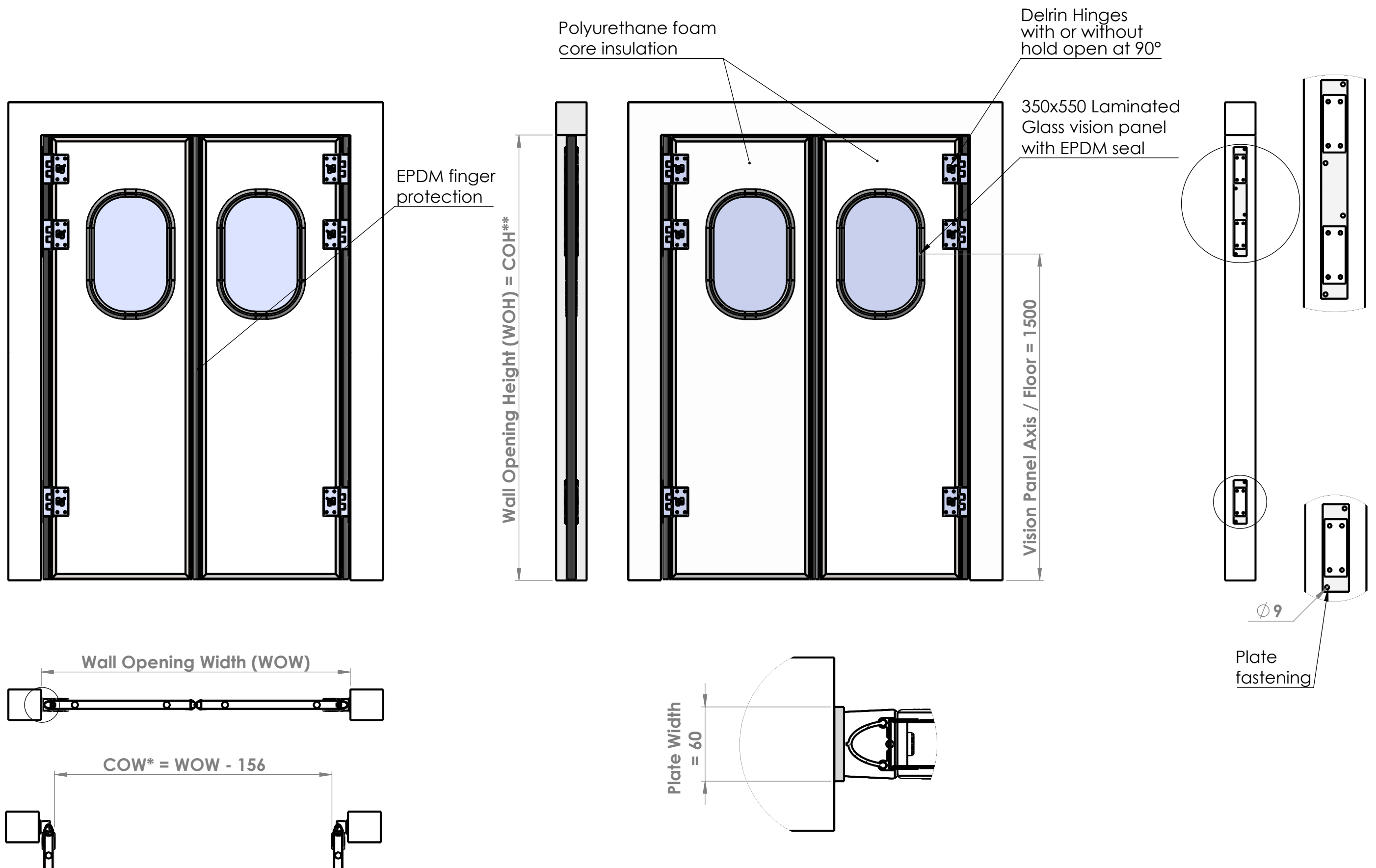
Type Porte :

**SP900**

Leaf with Delrin Hinges and all stainless steel mechanism  
Stainless steel Plates

**SPENLE** 

F-57400 SARREBOURG  
+33 (0)3 87 25 78 00  
www.spenle-international.com  
info@spenle-international.com



\*COW : Clear Opening Width  
 \*\*COH : Clear Opening Height

Type Porte :

**SP900**

Leaf with Delrin Hinges and  
 all stainless steel mechanism

Stainless steel Plates

**SPENLE** 

F-57400 SARREBOURG  
 +33 (0)3 87 25 78 00  
[www.spenle-international.com](http://www.spenle-international.com)  
[info@spenle-international.com](mailto:info@spenle-international.com)